

# TROPICAL ROOFTOP PACKAGE A SERIES



---

TRUST AIR CONDITIONING EQUIPMENT CO.  
Prepared By: Engineering & R & D Department.

# Content

1. Error Code .....	2
2. Accessory.....	9
3. Maintenance and Upkeep .....	10

**توجه:**

**شرکت تراست حق تغییر مشخصات دستگاه ها را در جهت بهبود و ارتقای کیفیت برای خود محفوظ می دارد.**

# 1. Error Code

## 1.1 Error code for 6.2ton

Type	Content	Code	Remarks
Normal	Standby	--	
Normal	Constraint cooling	On	
Normal	Running	10.	
Error	Compressor phase sequence error or phase default	E0	Manual reset
Error	Outdoor coil temp. sensor in system A error	E1	Manual reset
Error	Outdoor coil temp. sensor in system B error	E2	Manual reset
Error	Over-current protection of system A are active 3 times within one hour	E3	Unit shall be power off to recovery
Error	Indoor coil temp. sensor in system A error	E5	Manual reset
Error	Indoor coil temp. sensor in system B error	E6	Manual reset
Error	High、 low pressure protection or discharge temp. protection of system A reached 3 time	E7	Unit shall be power off to recovery
Error	Indoor temp. sensor T1 error	E9	Manual reset
Error	Outdoor ambient temp. sensor T4 error	EA	Manual reset
Error	Wired controller output error	Eb	Manual reset
Protection	Over-current protection in system A	P0	Auto reset
Protection	Over-current protection in system B	P1	Auto reset
Protection	Over-current protection for indoor fan	P2	Auto reset
Protection	Comprehensive protection for outdoor fan	P3	Auto reset
Protection	Protection for High/Low Pressure or exhaust temp in system A	P4	Auto reset
Protection	Hi-pressure protection initiated in T2 evaporator stops the outdoor unit fan	P6	Auto reset
Protection	Hi-pressure protection initiated in T2 evaporator stops the outdoor unit fan and compressor	P7	Auto reset
Protection	Protection for condenser Hi-temp. in system A	P8	Auto reset
Protection	Anti-freezing protection for evaporator in sys. A	Pc	Auto reset
Protection	Defrosting	dF	Auto reset

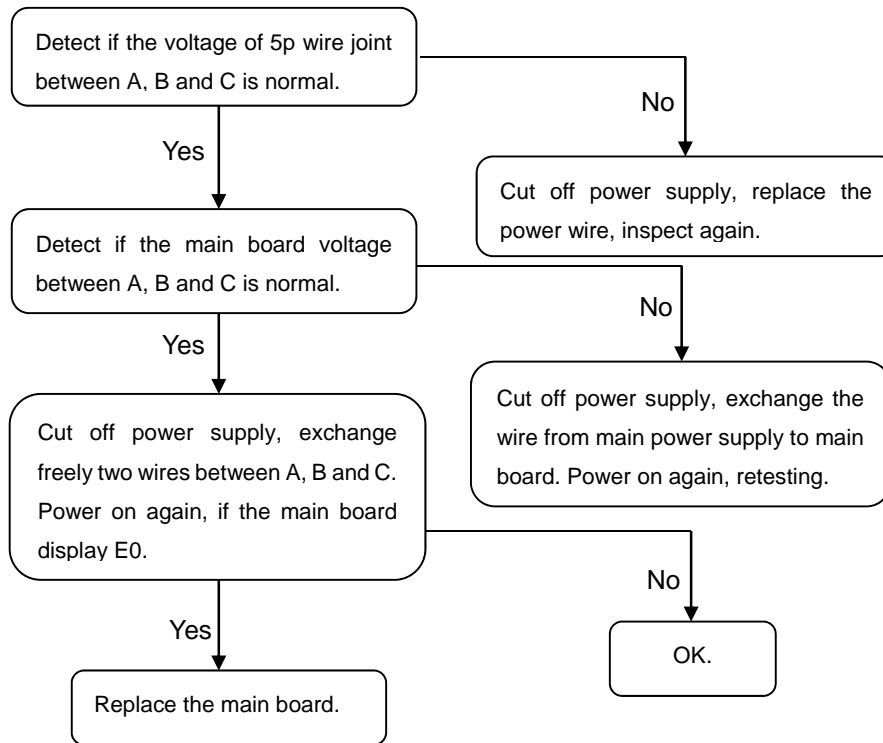
**Error code for 7.5ton and above**

Type	Content	Code	Remarks
Normal	Standby	--	
Normal	Constraint cool	On	
Normal	Run	10.	
Error	Compressor phase sequence error or phase default	E0	Manual reset
Error	Outdoor coil temp. sensor in sys. A error	E1	Manual reset
Error	Outdoor coil temp. sensor in sys. B error	E2	Manual reset
Error	Overcurrent protection of system A are active 3 times within One hour	E3	Unit shall be power off to recovery
Error	Overcurrent protection of system B are active 3 times within One hour	E4	Unit shall be power off to recovery
Error	Indoor coil temp. sensor in sys. A error	E5	Manual reset
Error	Indoor coil temp. sensor in sys. B error	E6	Manual reset
Error	High、 low pressure protection or discharge temp. protection Of system A reached 3times	E7	Unit shall be power off to recovery
Error	High、 low pressure protection or discharge temp. protection Of system B reached 3times	E8	Unit shall be power off to recovery
Error	Indoor temp. sensor error	E9	Manual reset
Error	Outdoor ambient temp. sensor error	EA	Manual reset
Error	Wired controller output error	Eb	Manual reset
Protection	Over-current protection in sys. A	P0	Auto reset
Protection	Over-current protection in sys. B	P1	Auto reset
Protection	Over-current protection for indoor fan	P2	Auto reset
Protection	Comprehensive protection for outdoor fan	P3	Auto reset
Protection	Protection for High/Low Pressure or exhaust temp. in sys. A	P4	Comprehensive protection in sys. A
Protection	Protection for High/Low Pressure or exhaust temp. in sys. B	P5	Comprehensive protection in sys. B
Protection	High-pressure protection initiated in T2 evaporator	P6	Auto reset
Protection	High-pressure protection initiated in T2 evaporator	P7	Auto reset
Protection	Protection for condenser High-temp. in sys. A	P8	Auto reset
Protection	Protection for condenser High-temp. in sys. B	P9	Auto reset
Protection	Anti-freezing protection for evaporator in sys. A	Pc	Auto reset
Protection	Anti-freezing protection for evaporator in sys. B	Pd	Auto reset
Protection	Defrosting	dF	Auto reset

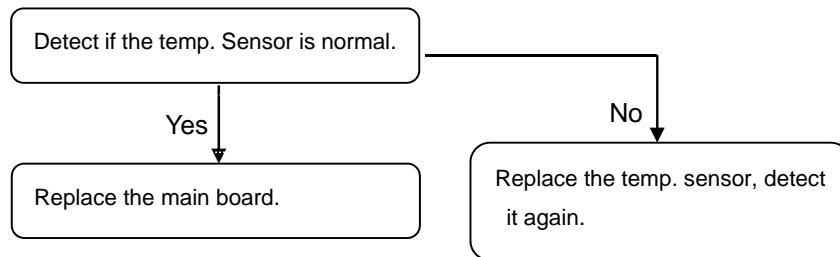
## 1.2 Trouble shooting

### For 6.2ton

#### 1) E0: Compressor phase sequence error or phase default

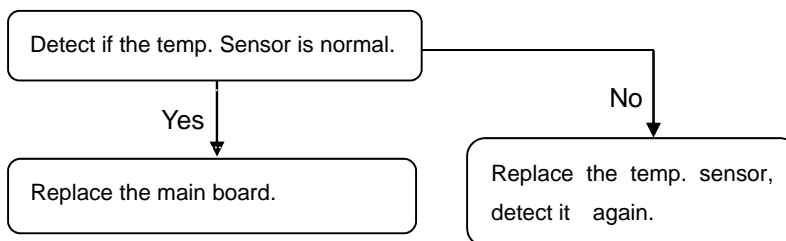


#### 2) E1: Outdoor coil temp. sensor in sys. A error



#### 3) E9: Indoor coil temp. sensor T2 default.

(Indoor temp. and Pipe Temp. Sensor Resistance Value Table, see **Appendix 2**)



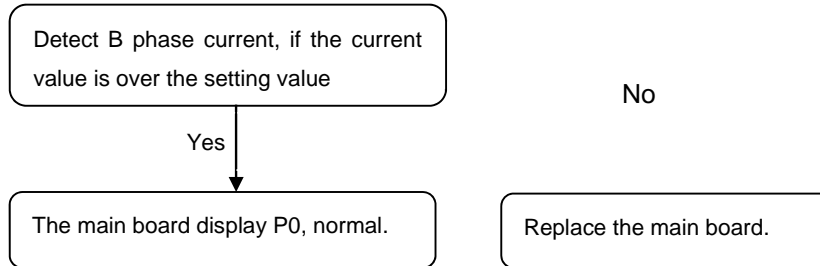
4) When E2,E5,E6 or EA displays, please check the wired nameplate, if the terminals of T2\_1、T2\_2、 T3\_2、 T4 are connected as short circuit. If no, please connect all as short circuit, unless replace main board.

5) Eb: Wired controller output error.(Only for KJR-23B or KJR-25B).

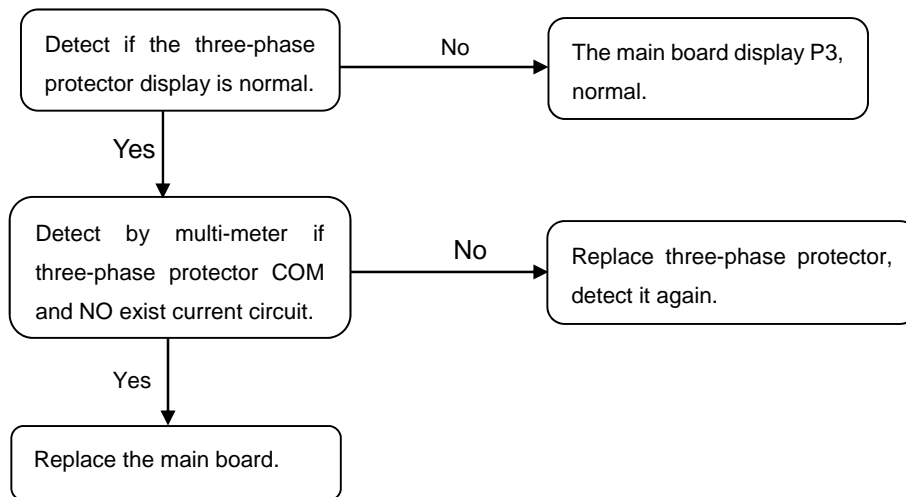
Avoid three conditions as following:

- 1) The wired controller output signal has Y, no G.
- 2) The wired controller output signal has W, no G.
- 3) The wired controller output signal has Y and W, no G.

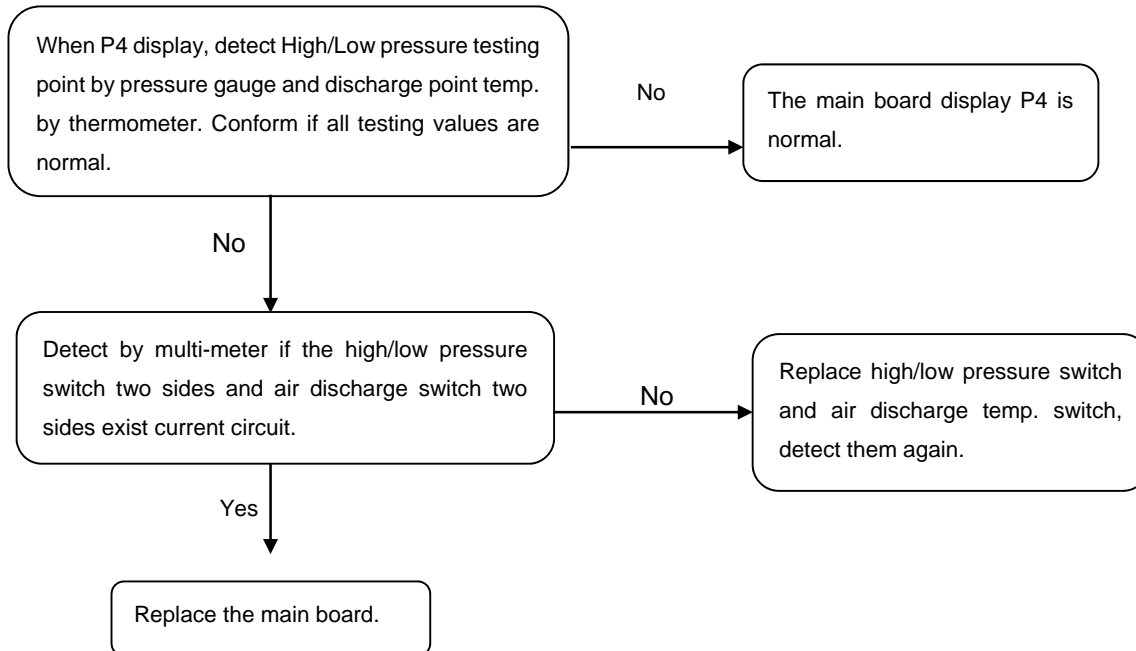
6). P0: Compressor over current protection.(The over current protection value is 16A)



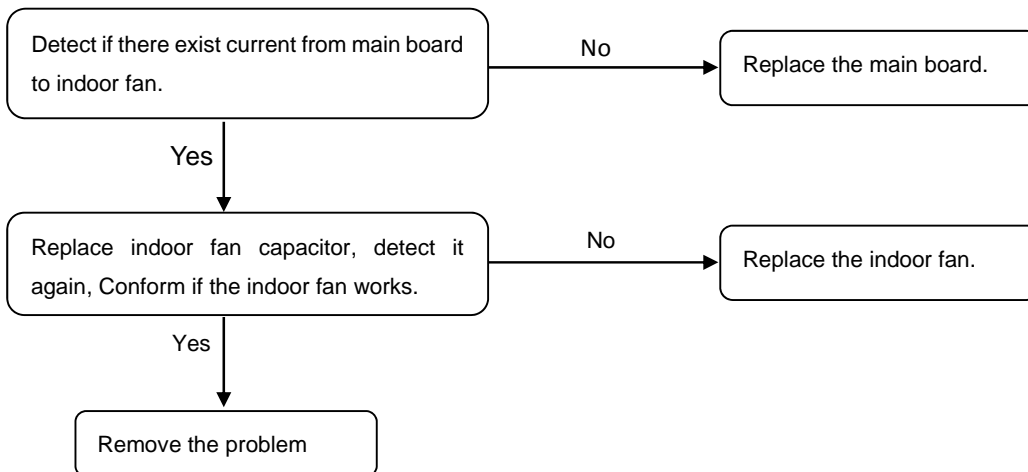
7). P3: Comprehensive protection for outdoor fan



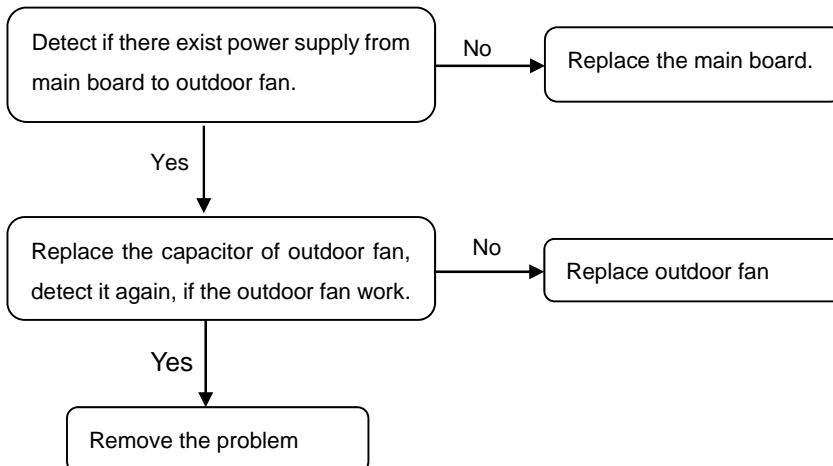
**8). P4: Protection for High/Low Pressure or exhaust temp. (High pressure protection value: 4.4MPa, High pressure protection value: 0.14MPa; air discharge temp. protection value: 130°C above)**



**9). Indoor fan motor didn't work.**

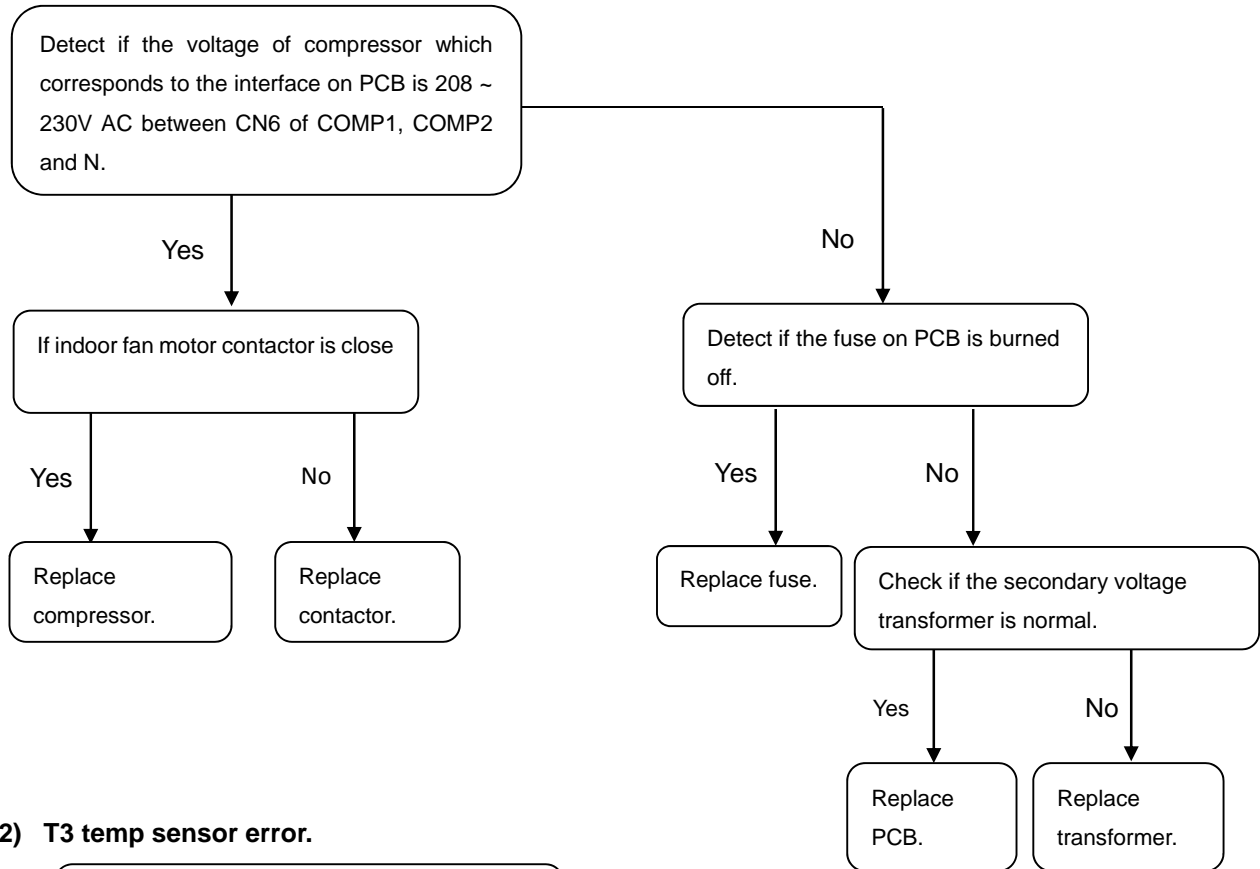


**10). Outdoor fan motor didn't work.**

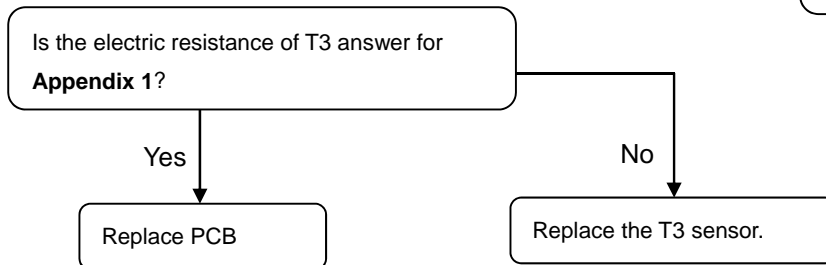


**For 7.5ton and above**

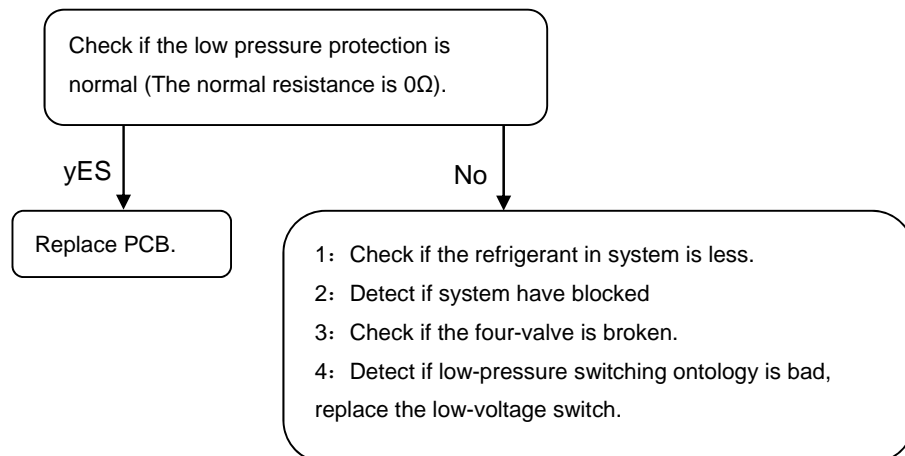
**1) Compressor didn't run (All wires connection are correct and reliable, if power supplier is required range. If compressor didn't run, you can analysis as flowing)**



**2) T3 temp sensor error.**

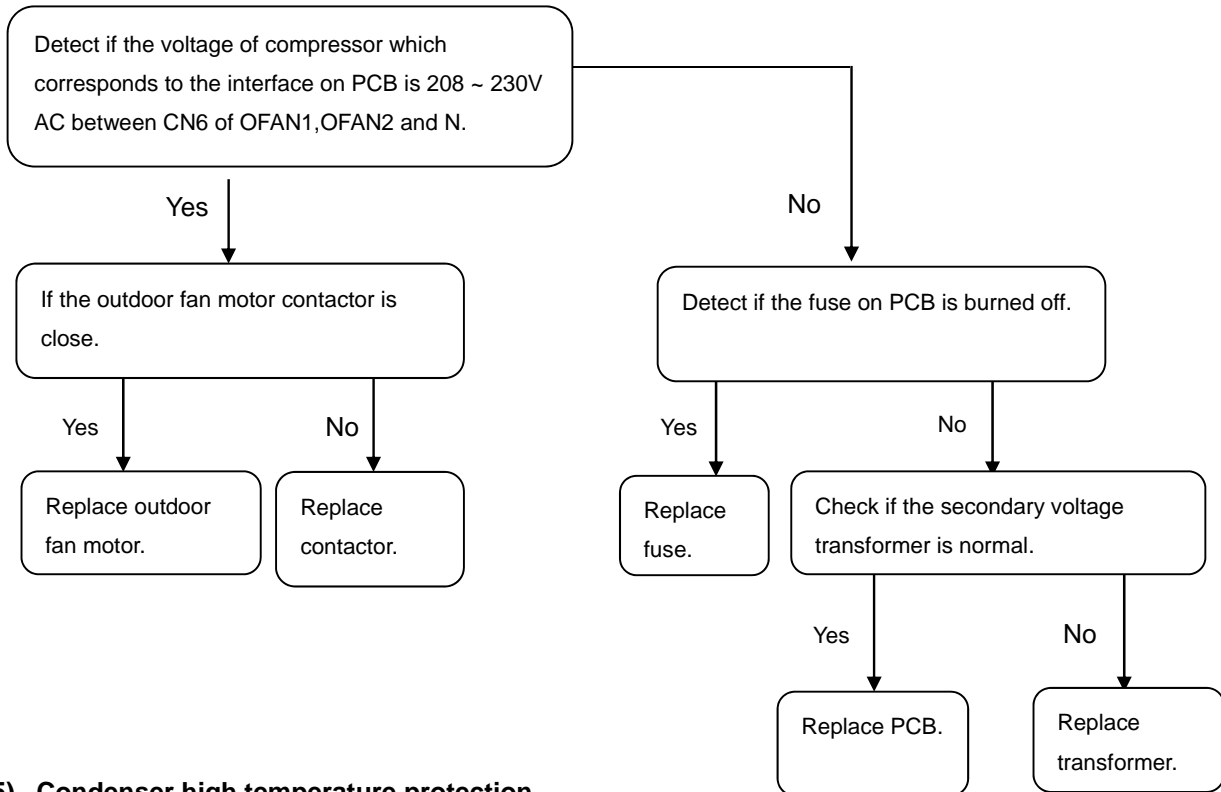


**3) Check if the low pressure protection is normal.**

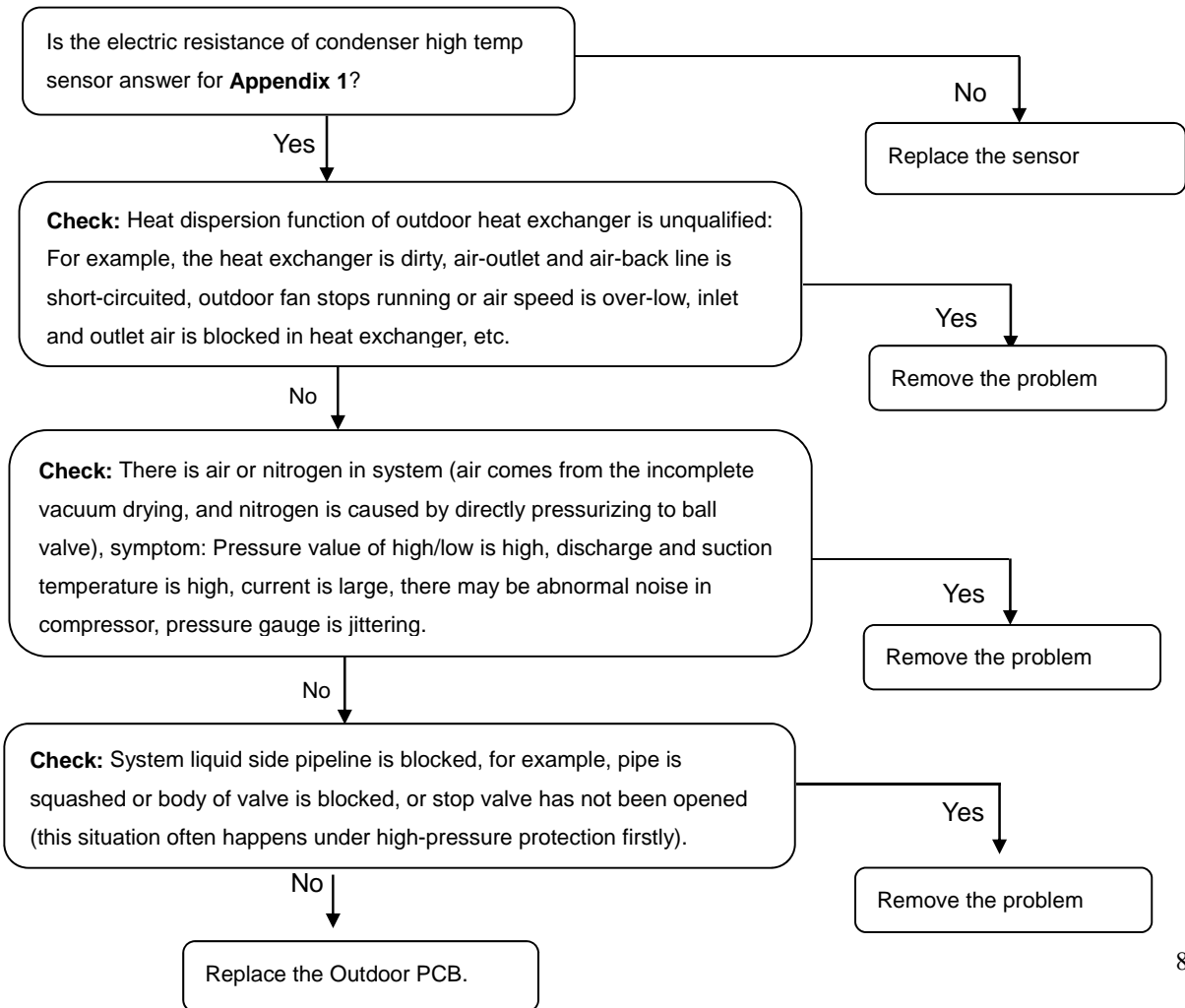








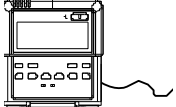
**4) Outdoor fan motor didn't run.**



**5) Condenser high temperature protection**



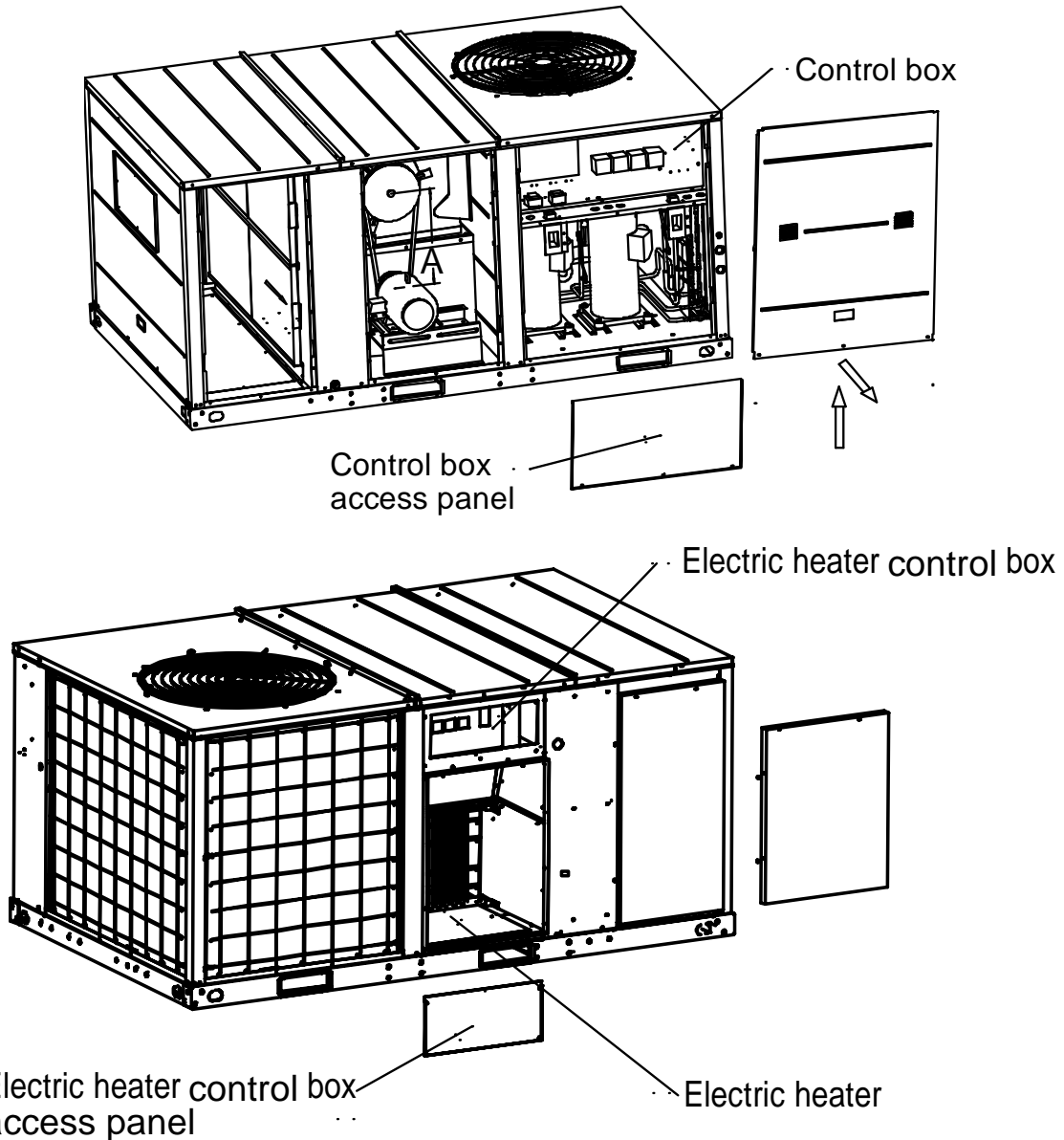
## 2. Accessory

Name	Quantity	Shape
Manual	1	
Drain outlet	1	
Snap ring	1	
Drain pipe	1	
KJR-12B Wire controller	1	

### 3. Maintenance and Upkeep

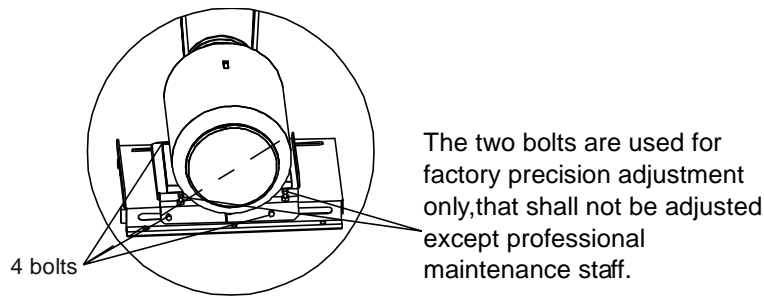
Regular maintenance and upkeep

Some regular maintenance and upkeep have been carry on by user, includes: change the one-time dust filter, clean casing, wash condenser and replace a new belt, as well as do some test for the equipment.



Note: At least 1m flame resistant layer must be laid at the end of the air duct internal surface.

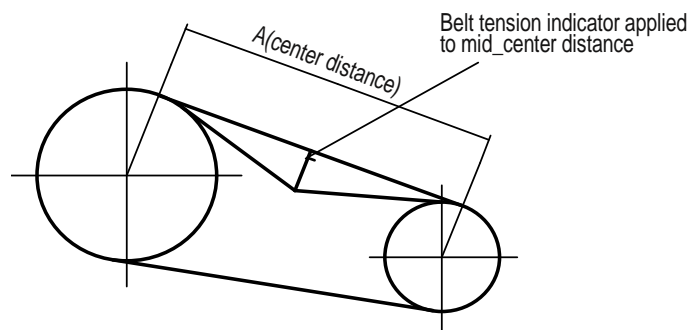
Regulating belt of tension, Refer to the following Fig. loose 4 bolts, and move the electric motor to adjust belt tension.



Belt tension is measured by belt tension indicator.

Calculate the deflection, deflection =  $A/64$ .

Measure the belt deflection force, the force should be between the values shown in the following Tab.



Model	A	Model	A
10 Ton	466mm	7.5Ton	406mm
12.5 Ton	620mm	8.5Ton	
15 Ton		17.5 Ton	575mm
20 Ton	525mm		

Belt section	For required to deflection		
	Small pulley diameter (mm)	Newton (N)	Kilogram-force (kgf)
SPA	80 to 132	25 to 35	2.5 to 3.6

**NOTE:**

The belt which is too tight or too loose may generate noise and be harmful to the unit.



Air Conditioning Systems

Cooling & Heating

**TRUST AIR-CONDITIONING EQUIPMENT CO.**

Shiraz office: 8 th floor, Alvand Bldg., Dostan St.,  
Moaliabad Ave., SHIRAZ, IRAN., Post code: 71877-14446

Tel.: +98-71-36341070

Fax.: +98-71-36341094

Tehran office: No. 19- koohe nour St.- Motahhari St.-

TEHRAN, IRAN., Post code: 15876-73111

Tel.: +98-21-89389

Fax.: +98-21-88541903

Ahwaz office: No. 309- Kaveh St.- AHWAZ, IRAN., Post code: 61939-47911

Tel.: +98-61-32230647-8 E-mail: [info@trustacs.com](mailto:info@trustacs.com)

Fax.: +98-61-32230647 Web site: <http://www.trustacs.com>

برند برتر در اولین جشنواره بین المللی  
برترین نام و نشان های تجاری ایران

